

# Translating FIRE.sys Documents in SDL Trados Studio 2009

Working with custom file type definitions

## Summary

FIRE.sys is a financial reporting solution based on Microsoft Word, which enables you to produce your own annual or interim reports in-house – efficiently and with great flexibility.

SDL Trados Studio 2009 SP3 Professional is the ultimate translation software. It provides all translation tools in one integrated editing, reviewing, project management and terminology environment. It combines the leading translation memory technology with a host of powerful features, such as AutoSuggest™, to help your translation projects get completed faster than ever before

This document describes how to set up your translation environment to work on FIRE.sys documents in SDL Trados Studio 2009.

## Table of contents

<b>1</b>	<b>Adding the Custom FIRE.sys File Type Definition for Word</b>	
1.1	Custom File Type for FIRE.sys Word Documents .....	2
1.2	Why the Order of File Types is Important .....	3
<b>2</b>	<b>Appendix</b>	
2.1	List of FIRE.sys styles excluded by default from translation .....	4
<b>3</b>	<b>About Konrad Media Solutions</b>	
<b>4</b>	<b>About SDL</b>	

# 1 Adding the Custom FIRE.sys File Type Definition for Word

SDL Trados Studio supports a variety of file types. If a file is one of the supported file types, SDL Trados Studio can extract the translatable text from the file, so you can translate the document contents.

SDL Trados Studio maintains option settings for each supported file type. These options determine how SDL Trados Studio processes a file of that type, when the file is presented for translation. For example, the options specify:

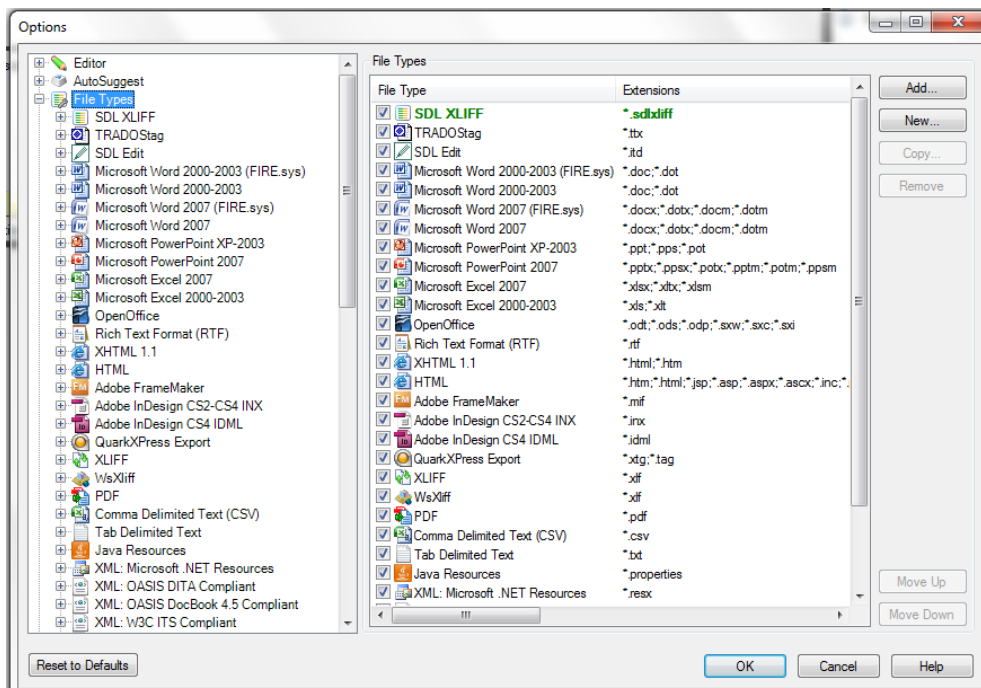
- How SDL Trados Studio identifies the type of the presented file, for example, what file name extensions are used for files of that type.
- How SDL Trados Studio identifies which part of the file contents should be translated, and what content should not be translated.

The file type options that SDL Trados Studio provides are suitable for most users, and you might not have to change them. However, you can change many settings that affect the way SDL Trados Studio processes files and presents them to the translator.

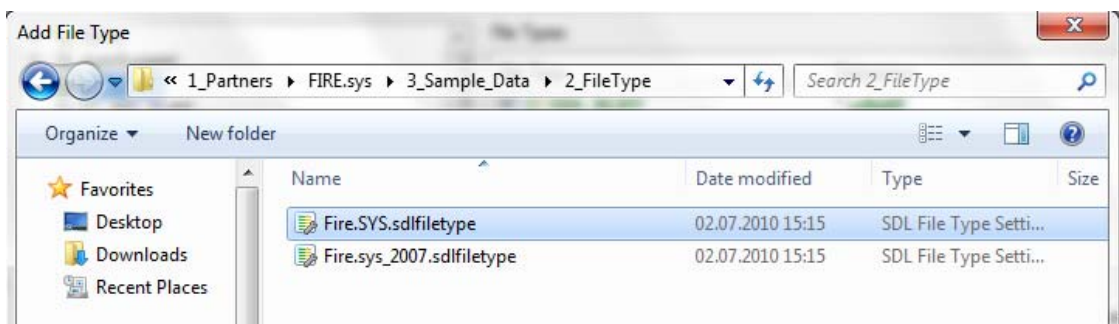
## 1.1 Custom File Type for FIRE.sys Word Documents

For processing Word files originating from FIRE.sys a custom file type has been created. To work with this custom file type, follow these steps:

- In SDL Trados Studio go to **Tools -> Options**.
- Select **File Types**. The existing file types are listed both in the navigation tree and in the **File Types** pane on the right.



- Click **Add**. The **Open File Type** dialog box is displayed.
- Navigate to the \*.sdlfiletype file for the file type, select the file and click **Open**. The file type is added to the top of the list of file types.



## 1.2 Why the Order of File Types is Important

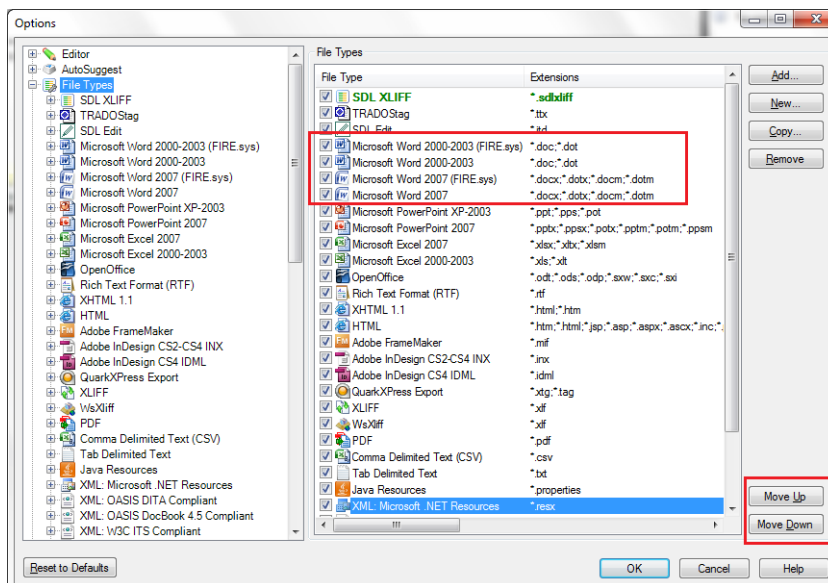
When you double-click File Types, or click the plus icon, the File Types tree expands to show a list of supported file types (see screenshot above).

You can change the order of file types in the list, but be aware that the order of the file types in the list is important: to find a match, SDL Trados Studio searches this list starting at the top, and working its way downwards. It processes a file as the first file type that matches.

You can have more than one file type with the same file name extension. For example, you can have several Word file types. In such cases, you need rules that identify the file type by the file's contents.

Because of the search order, put the generic Word file type (which has no file content rules) below the all other (custom) Word file types. If you do not do this, SDL Trados Studio will assign any Word file to the generic Word file type.

To change the file type order, use the **Move Up** and **Move Down** button.



It is for this reason that when you create a file type, SDL Trados Studio puts the new file type at the top of the list.

## 2 Appendix

### 2.1 List of FIRE.sys styles excluded by default from translation

- T\_Body\_bold\_Number
- T\_Body\_bold\_Text
- T\_Body\_subhead\_Text
- T\_Body\_subhead\_Number
- T\_Body\_subtotal\_Text
- T\_Body\_total\_Text
- T\_Body\_total\_Number
- T\_Body\_normal\_Text
- T\_Body\_normal\_Number
- T\_Head\_first\_Text
- T\_Head\_first\_Number
- T\_Head\_last\_Text
- T\_Head\_last\_Number
- T\_Head\_next\_Text
- T\_Head\_next\_Number
- T\_Head\_single\_Text
- T\_Head\_single\_Number
- T\_Body\_subtotal\_Number
- T\_Body\_italic\_Text
- T\_Body\_italic\_Number
- T\_Standard

## 3 About Konrad Media Solutions

Michael Konrad GmbH in Frankfurt has been developing interfaces between office computers and the world of professional graphic design since 1989. The company is one of the leading suppliers of cross media financial reporting solutions in print and online.

For detailed information about Konrad Media, please point your browser to [www.konrad.de](http://www.konrad.de) and [www.firesys.de](http://www.firesys.de).

## 4 About SDL

SDL is the leader in Global Information Management solutions, which provide increased business agility to enterprises by accelerating the delivery of high-quality multilingual content to global markets. The company's integrated Web Content Management, eCommerce, Structured Content and Language Technologies, combined with its Language Services drive down the cost of content creation, management, translation and publishing. SDL solutions increase conversion ratios and customer satisfaction through targeted information that reaches multiple audiences around the world through different channels.

Global industry leaders who rely on SDL include ABN-Amro, Bosch, Canon, CNH, FICO, Hewlett-Packard, KLM, Microsoft, NetApp, Philips, SAP, Sony and Virgin Atlantic. SDL has over 1000 enterprise customers, has deployed over 170,000 software licenses and provides access to on-demand portals for 10 million customers per month. It has a global infrastructure of more than 50 offices in 32 countries. For more information, visit [www.sdl.com](http://www.sdl.com).